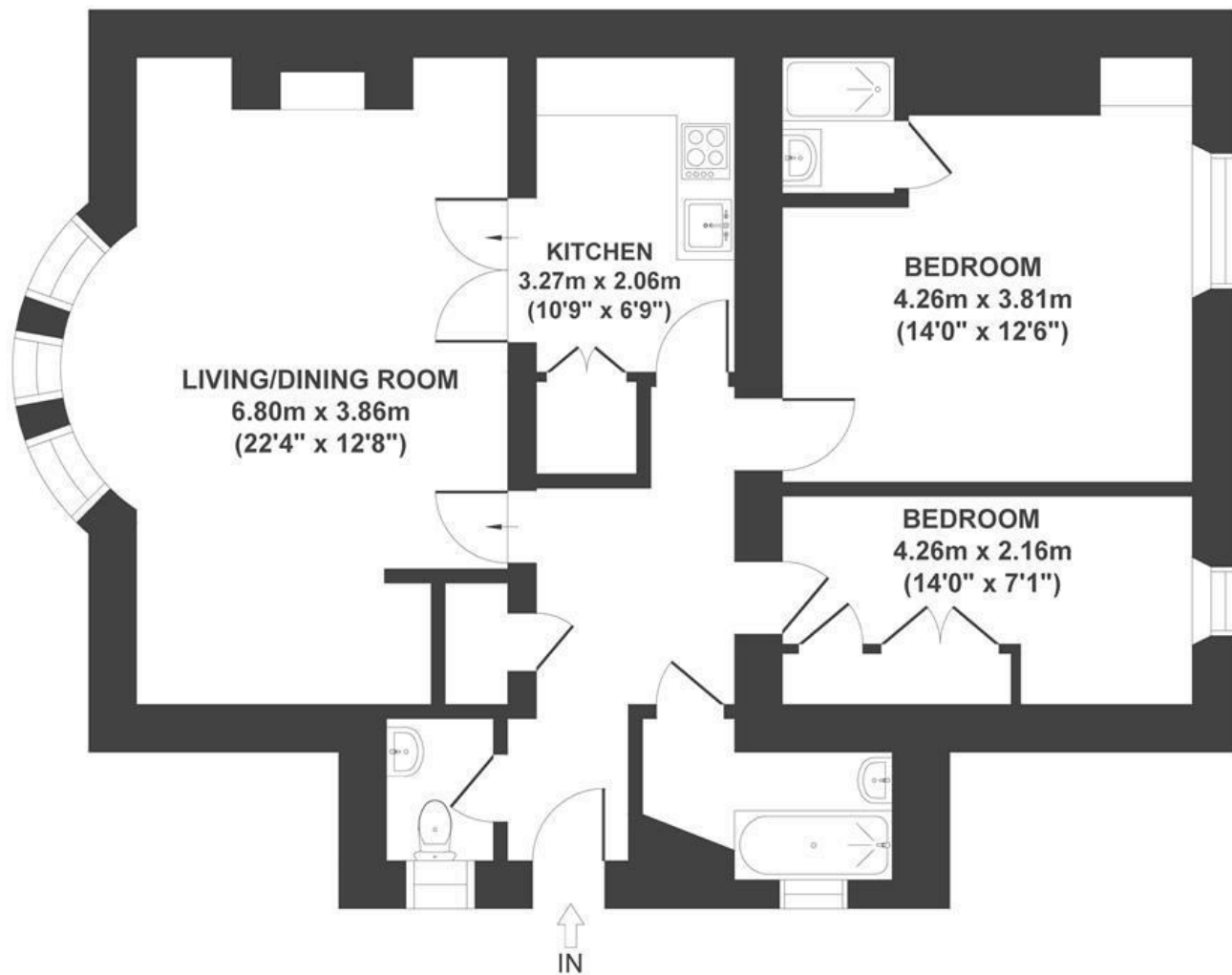


# Ashgrove Road

REDLAND

APPROXIMATE FLOOR AREA

85 SQM / 916 SQFT



**Boardwalk**

# Ashgrove Road

REDLAND, BRISTOL



£425,000



2 Bedrooms



BS6 6NA



2 Bathrooms

*"I loved living in this flat for its sense of space, warmth and ease. The garden has been a real retreat, perfect for slow mornings and summer evenings. The large windows fill the living room with soft, natural light, but in winter I love closing the shutters to make it instantly cosy. The street is peaceful, yet just a short stroll from shops and pubs, so everything you need is on the doorstep. It's been a home filled with happy moments, and I hope the next owner enjoys it just as much."*

